

Anti-CXCL13 antibody [EPR23400-92]

Anti-CXCL13 antibody [EPR23400-92] (ab246518) is a rabbit monoclonal antibody detecting CXCL13 in **IHC-P**. Suitable for **Human**.

- Biophysical QC for unrivalled batch-batch consistency

Recombinant

RabMAb

Key facts

Isotype	IgG
Host species	Rabbit
Storage buffer	pH: 7.2 - 7.4 Preservative: 0.01% Sodium azide Constituents: PBS, 40% Glycerol (glycerin, glycerine), 0.05% BSA
Form	Liquid
Clonality	Monoclonal
Immunogen	The exact immunogen used to generate this antibody is proprietary information.
Clone number	EPR23400-92
Purification technique	Affinity purification Protein A
Concentration	0.439 - 0.525 mg/mL The concentration of this product may be batch-dependent Batch concentration finder →

Reactivity data

IP

Not recommended

Species	Human
Dilution info	-

Notes	Perform heat-mediated antigen retrieval with Tris/EDTA buffer pH 9.0 before commencing with IHC staining protocol.
Species	Mouse
Dilution info	-
Notes	-

Species	Rat
Dilution info	-
Notes	-

Flow Cyt

Not recommended

Species	Human, Mouse, Rat
Dilution info	-
Notes	-

WB

Not recommended

Species	Human, Mouse, Rat
Dilution info	-
Notes	-

ICC/IF

Not recommended

Species	Human, Mouse, Rat
Dilution info	-
Notes	-

IHC-P

Tested

Species	Human
Dilution info	1/1000
Notes	Perform heat-mediated antigen retrieval with Tris/EDTA buffer pH 9.0 before commencing with IHC staining protocol.

Not recommended

Species	Mouse
Dilution info	-
Notes	Perform heat-mediated antigen retrieval with Tris/EDTA buffer pH 9.0 before commencing with IHC staining protocol.

Species	Rat
Dilution info	-
Notes	Perform heat-mediated antigen retrieval with Tris/EDTA buffer pH 9.0 before commencing with IHC staining protocol.

Target data

[See full target information CXCL13](#) 

Function	Chemotactic for B-lymphocytes but not for T-lymphocytes, monocytes and neutrophils. Does not induce calcium release in B-lymphocytes. Binds to BLR1/CXCR5.
-----------------	--

Storage

Shipped at conditions	Blue Ice
Appropriate short-term storage duration	1-2 weeks
Appropriate short-term storage conditions	+4°C
Appropriate long-term storage conditions	-20°C
Aliquoting information	Upon delivery aliquot
Storage information	Avoid freeze / thaw cycle

Notes

What is this antibody validated in?

Anti-CXCL13 antibody [EPR23400-92] (ab246518) is a rabbit recombinant monoclonal antibody and is validated for use in Immunohistochemistry (IHC-P) in Human samples.

Trial sizes available!

Test your antibody or perform pre-screening before committing to a larger quantity. Sold in 10µl. Discover our selection of trial-size antibodies.

Other related products

We have a range of other formats of antibody clone [EPR23400-92] also available for your convenience: ab246518, Carrier free - ab270408, Alexa Fluor® 647 - ab314944, Biotin - ab316303

Patented technology

Our RabMAb® technology is a patented hybridoma-based technology for making rabbit monoclonal antibodies. For details on our patents, please refer to RabMAb® patents.

What are the advantages of a recombinant monoclonal antibody?

This product is a recombinant monoclonal antibody, which offers several advantages including:

- High batch-to-batch consistency and reproducibility
- Improved sensitivity and specificity
- Long-term security of supply
- Animal-free batch production

For more information, read more on recombinant antibodies.

Supplementary info

This supplementary information is collated from multiple sources and compiled automatically.

Activity summary

CXCL13 also known as B cell-attracting chemokine 1 (BCA-1) is a chemokine with a molecular weight of approximately 11 kDa. This protein plays an important mechanical role in the immune system by guiding the movement of B cells via chemotaxis. CXCL13 expression occurs mainly in secondary lymphoid tissues such as the spleen lymph nodes and mucosa-associated lymphoid tissue. Its expression is also noted in certain non-lymphoid tissues under inflammatory conditions.

Biological function summary

In the context of immune response and lymphoid tissue organization CXCL13 attracts B cells by interacting with the chemokine receptor CXCR5. These interactions support the formation of B-cell follicles essential for efficient immune responses. CXCL13 is not known to be part of a larger protein complex but instead works through its specific receptor-ligand interactions. Its role in guiding cell migration is vital for the development of secondary lymphoid structures.

Pathways

CXCL13 is significantly involved in the B-cell receptor signaling pathway. The chemokine facilitates the homing of B cells to follicles an important step in the adaptive immune response. CXCL13 closely associates with CXCR5 its specific receptor playing a part in establishing the spatial organization of lymphoid tissues.

Additionally the chemokine influences the germinal center reaction an integral part of the immune pathway for antibody maturation.

Associated diseases and disorders

CXCL13 levels have been linked to autoimmune diseases like rheumatoid arthritis and certain types of lymphomas. In rheumatoid arthritis increased CXCL13 expression correlates with disease severity related to its role in recruiting B cells that contribute to chronic inflammation. In lymphomas particularly those involving B cells CXCL13 supports the growth and survival of malignant cells. Its association with disease states often involves changes in CXCR5 expression or function contributing to disrupted B-cell localization and abnormal immune responses.

Product promise

Tested

We have tested this species and application combination and it works. It is covered by our product promise.

Expected

We have not tested this specific species and application combination in-house, but expect it will work. It is covered by our product promise.

Predicted

This species and application combination has not been tested, but we predict it will work based on strong homology. However, this combination is not covered by our product promise.

Not recommended

We do not recommend this combination. It is not covered by our product promise.

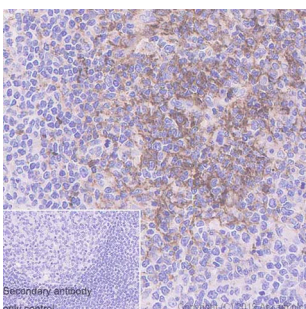
We are dedicated to supporting your work with high quality reagents and we are here for you every step of the way should you need us.

In the unlikely event of one of our products not working as expected, you are covered by our product promise.

Full details and terms and conditions can be found here:

[Terms & Conditions.](#)

3 product images

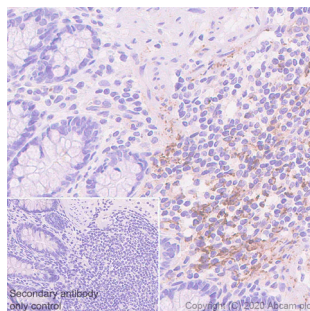


Immunohistochemistry (Formalin/PFA-fixed paraffin-embedded sections) - Anti-CXCL13 antibody [EPR23400-92] (ab246518)

Immunohistochemical analysis of paraffin-embedded Human tonsil tissue labeling CXCL13 with ab246518 at 1/1000 dilution followed by a ready to use Rabbit specific IHC polymer detection kit HRP/DAB ([ab209101](#)). Positive staining on the germinal center in the human tonsil. The section was incubated with ab246518 for 30 mins at room temperature. The immunostaining was performed on a Leica Biosystems BOND® RX instrument Counterstained with Hematoxylin.

Secondary antibody only control: Secondary antibody is a ready to use Rabbit specific IHC polymer detection kit HRP/DAB ([ab209101](#)).

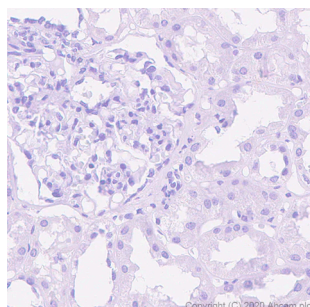
Heat mediated antigen retrieval with Tris-EDTA buffer (pH 9.0, epitope retrieval solution2) for 20 mins



Immunohistochemistry (Formalin/PFA-fixed paraffin-embedded sections) - Anti-CXCL13 antibody [EPR23400-92] (ab246518)

Immunohistochemical analysis of paraffin-embedded Human colon tissue labeling CXCL13 with ab246518 at 1/1000 dilution followed by a ready to use Rabbit specific IHC polymer detection kit HRP/DAB ([ab209101](#)). Positive staining on the lymphoid tissue in the human colon. The section was incubated with ab246518 for 30 mins at room temperature. The immunostaining was performed on a Leica Biosystems BOND® RX instrument Counterstained with Hematoxylin. Secondary antibody only control: Secondary antibody is a ready to use Rabbit specific IHC polymer detection kit HRP/DAB ([ab209101](#)).

Heat mediated antigen retrieval with Tris-EDTA buffer (pH 9.0, epitope retrieval solution2) for 20 mins



Immunohistochemistry (Formalin/PFA-fixed paraffin-embedded sections) - Anti-CXCL13 antibody [EPR23400-92] (ab246518)

Immunohistochemical analysis of paraffin-embedded Human kidney tissue labeling CXCL13 with ab246518 at 1000 dilution followed by a ready to use Rabbit specific IHC polymer detection kit HRP/DAB ([ab209101](#)). **Negative control:** no staining on the human kidney (PMID: 19955043). The section was incubated with ab246518 for 30 mins at room temperature. The immunostaining was performed on a Leica Biosystems BOND® RX instrument Counterstained with Hematoxylin. Secondary antibody only control: Secondary antibody is a ready to use Rabbit specific IHC polymer detection kit HRP/DAB ([ab209101](#)).

Heat mediated antigen retrieval with Tris-EDTA buffer (pH 9.0, epitope retrieval solution2) for 20 mins

Please note: All products are 'FOR RESEARCH USE ONLY. NOT FOR USE IN DIAGNOSTIC OR THERAPEUTIC PROCEDURES'.